

1000 BASE-T Dual Ports DIL Package Magnetics Module

RoHS Compliant at Peak Wave Solder Temperature rating 260°C

Electrical Specifications: @25

Turns Ratio: PRI/SEC 1CT:1CT±5%
 Isolation Voltage: 1500 Vrms (Input to Output)
 OCL: 350uH Minimum @100KHz 100mV 8mADC
 Insertion Loss: -1.1dB Maximum @1-100MHz
 Return Loss: -16dB Minimum @1MHz-30MHz
 -12dB Minimum @60MHz-80MHz
 -10dB Minimum @100MHz



Crosstalk: -45dB Min @1-30MHz
 -40dB Min @60MHz
 -35dB Min @100MHz

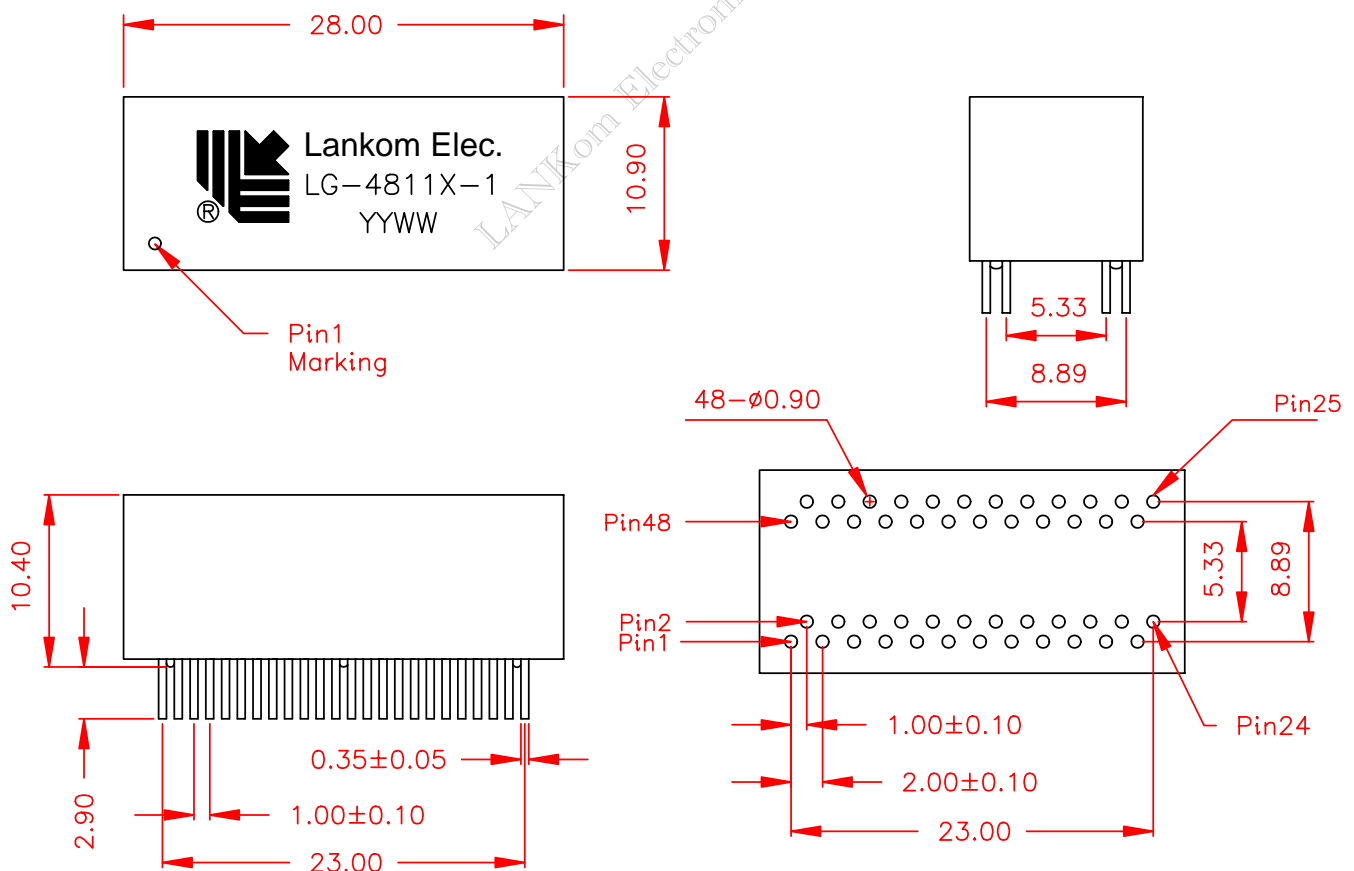
Common Mode Rejection (Tx/Rx):

-40dB Min @1-30MHz
 -37dB Min @60MHz
 -33dB Min @100MHz

Operating temperature range: 0°C to +70°C

Storage temperature range: -25°C to +85°C

Mechanicals:



Suggest PCB Layout mounting (top view)

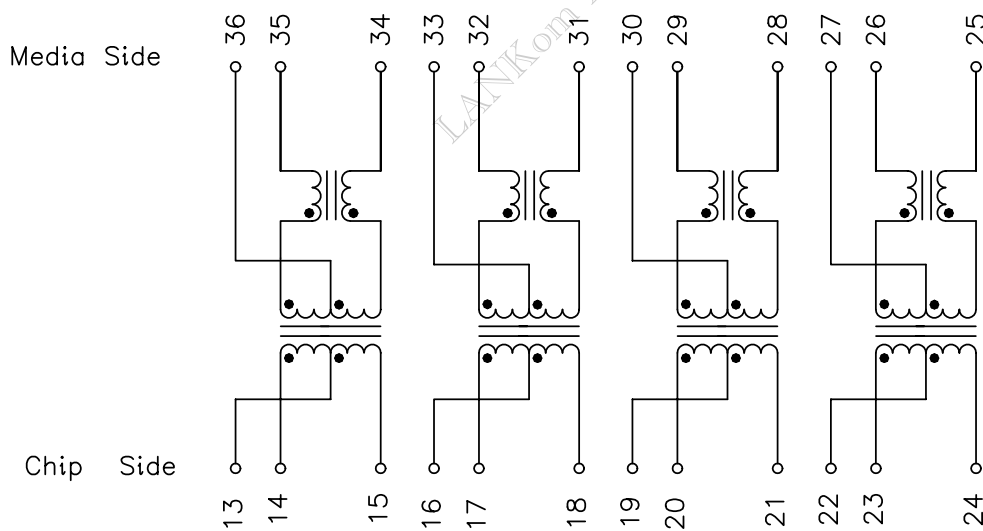
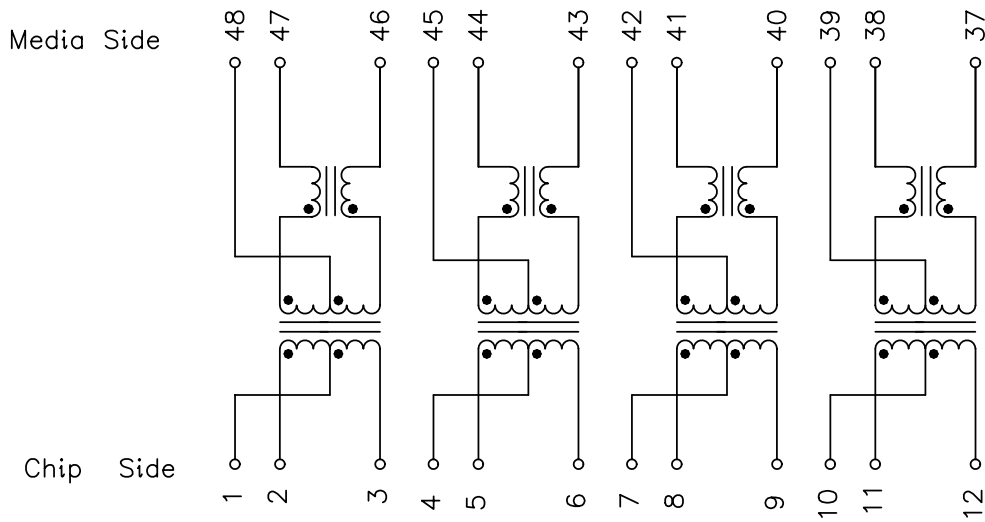
*Specification Subject to Change Without Notice.

P/N: LG-4811X-1	DIMENSIONS IN MM	Unless otherwise specified Dim. Tolerances are: .xx ±0.25	REV: A3	DRWN:Jacob	DATE:08/07/29
	SCALE: NONE		PAGE:1/2	CHECK:Arthur	DATE:08/07/29
TEL: 886-2-6606-9777 • FAX: 886-2-6606-9555 • E-mail: sales@lankom.com.tw			APPD:Jarly	DATE:08/07/29	

1000 BASE-T Dual Ports
DIL Package Magnetics Module

RoHS Compliant at Peak Wave Solder Temperature rating 260°C

Schematics:



*Specification Subject to Change Without Notice.

P/N: LG-4811X-1	DIMENSIONS IN MM	Unless otherwise specified Dim. Tolerances are: .xx ±0.25	REV: A3	DRWN:Jacob	DATE:08/07/29
	SCALE: NONE		PAGE:2/2	CHECK:Arthur	DATE:08/07/29
TEL: 886-2-6606-9777 • FAX: 886-2-6606-9555 • E-mail: sales@lankom.com.tw			APPD:Jarly	DATE:08/07/29	